



NBPS FALL REOPENING PLAN OVERVIEW

OFFICE OF INSTRUCTION

August 26, 2020

5:00 PM

Online Family Forum

Previous Online Family Forums:

- Health & Safety: PPE, Facilities, Transportation
- Special Education and Student Services
- Athletics and Fine Arts

NEW BEDFORD PUBLIC SCHOOLS GOALS

- I. **High Quality Instruction:** Increase student achievement by strengthening teaching and learning.
- II. **Effective Student Support Systems:** Create an inclusive, culturally responsive learning environment.
- III. **Strong Family / Community Relationships:** Empower families and the community through collaboration.
- IV. **Organizational Team Excellence:** Cultivate and recruit a highly skilled workforce.
- V. **Public Confidence and Pride:** Implement effective strategies to raise the profile and reputation of NBPS.

Office of Instruction Topics

1. Guiding Principles
2. Safety
3. Student Cohorts
4. In-Person Learning
5. Hybrid Learning
6. Distance Learning
7. Curriculum Resources



Guiding Principles

Supporting student learning and holistic needs

Focus on students' holistic needs

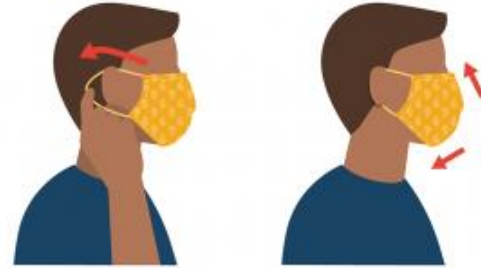
Our Plan is developed utilizing the following guiding principles:

- **Safety and well-being** of students, staff, and families has been and must continue to be our top priority
- **Equity and access for all students is critical as this** crisis disproportionately affects our most vulnerable students (their physical and mental health AND their academics)
- **Maintaining connections** between school staff and students is paramount for all students

SAFETY FIRST

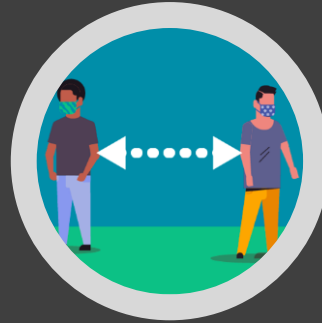
Wear your Mask Correctly

- Wash your hands before putting on your mask
- Put it over your nose and mouth and secure it under your chin
- Try to fit it snugly against the sides of your face
- Make sure you can breathe easily
- CDC does not recommend use of masks or cloth masks for source control if they have an exhalation valve or vent



Wear a Mask to Protect Others

- Wear a mask that covers your nose and mouth to help protect others in case you're infected with COVID-19 but don't have symptoms
- Wear a mask in public settings when around people who don't live in your household, especially when it may be difficult for you to stay six feet apart
- Wear a mask correctly for maximum protection
- Don't** put the mask around your neck or up on your forehead
- Don't** touch the mask, and, if you do, wash your hands or use hand sanitizer to disinfect



SAFETY FIRST

Follow Everyday Health Habits

- Stay at least 6 feet away from others
- Wash your hands often, with soap and water, for at least 20 seconds each time
- Use hand sanitizer if soap and water are not available
- Stay home if you are sick





Resources and Research

- DESE [Guidance](#)
- Harvard T. H. Chan School of Public Health special report on [Healthy Schools - Reopening Guidance](#)
- American Academy of Pediatrics [Guidance on Reopening Schools](#)
- CDC [Considerations for Schools](#)
- New Bedford [Health Department](#)
- Information and Feedback sessions with community partners and stakeholders

OPTION I



APPROVED PLAN –School Committee vote: 7-0 (August 12, 2020)

Option 1: Hybrid A

Summary: Phases begin 9/16 (9/10 HayMac, Gomes, Parker) with in-person instruction for Cohort A (designated students). Cohort B begins (10/5). Cohort C begins (10/19)

Phase I:

August 31: All Staff report to work to for staff training and professional development

Phase II:

September 16: Cohort A: Designated Students (in person 5 days)

September 16: Cohort B and C: will be all distance learning

Phase III:

Students Cohort A in person 5 days a week

October 5: Cohort B – Transition Grades (PreK, K, 6 and 9)

B1 – In person Mon/Tues; Distance Wed/Thurs/Fri

B2 – In person Thurs/Fri; Distance Mon/Tues/Wed

October 19: Cohort C – Remaining Students

C1 – In person Mon/Tues; Distance Wed/Thurs/Fri

C2 – In person Thurs/Fri; Distance Mon/Tues/Wed

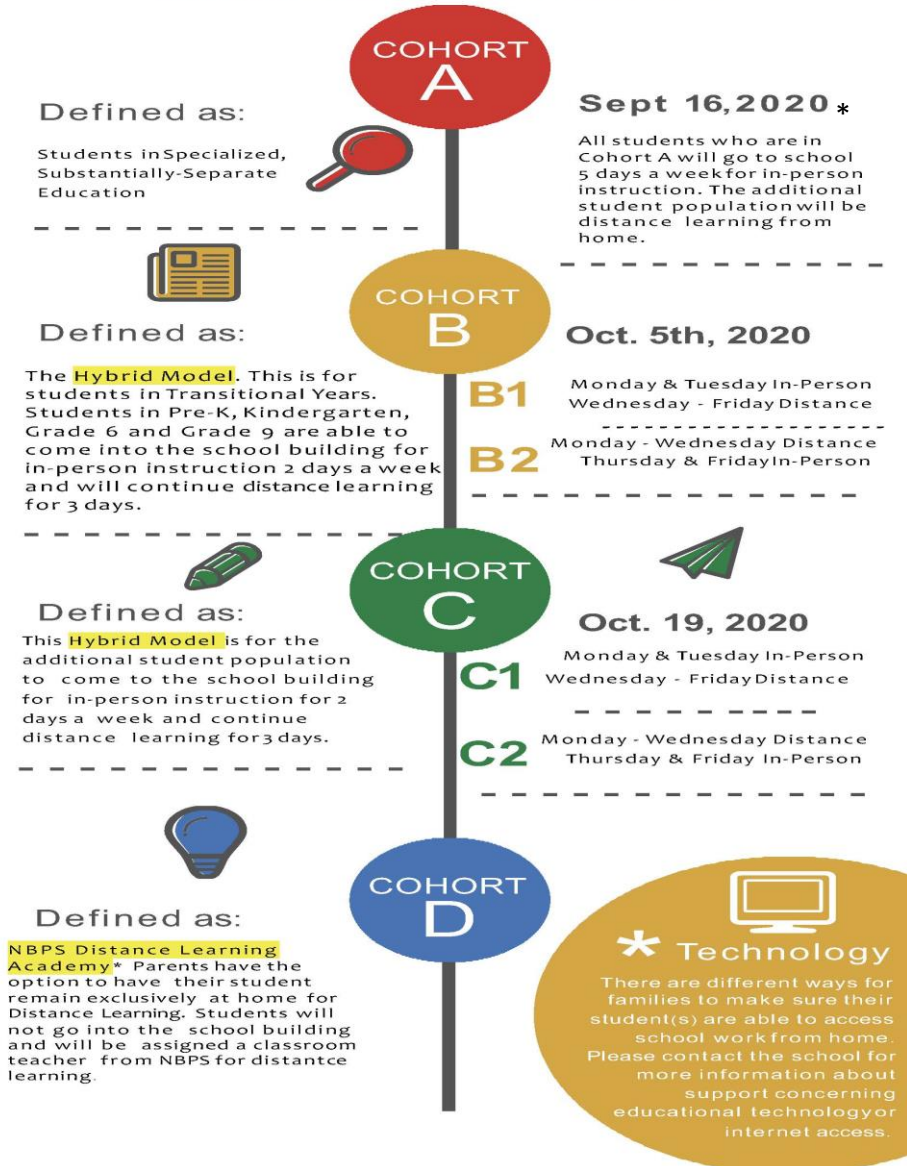
Next phase of instruction will be determined by:

- Virus transmission rate (currently 2.2% in New Bedford and 2.0% state avg.)
- Facility Readiness (corrective actions in identified rooms)

NBPS COHORTS

New Bedford Public Schools has designed 4 Cohorts for students returning to school for the 2020-2021 school year. Here is our "Cheat-Sheet" to help families understand and make the best decision regarding your student's education. All students start school on September 16th, 2020 in one of the 3 models:

Full in-person, Hybrid, or Distance Learning Academy.



*Sept. 10, 2020 – HayMac, Gomes, Parker

Changing Cohorts

DESE FAQ: What can a district do to avoid disruptions that occur if parents change their mind about whether their child will attend school remotely or in-person?

- Many districts have surveyed parents/caregivers about their intention to return to in-person instruction.
- It is recommended that districts and parents/caregivers continue to be in close communication.
- When parents/caregivers communicate early that a child is moving from one model to another (e.g., in-person/hybrid to distance or distance to in-person/hybrid), it allows for more thoughtful planning by their child's school.
- If necessary, to comply with health and safety requirements, districts may establish a policy that sets a reasonable transition period, ideally no more than three to four weeks, to plan for the introduction of a new student from remote to in-person learning. During this period, remote teaching and learning must continue for that student.

In-Person vs. Hybrid vs. Distance Learning

All In-Person Learning (Only Cohort A) is only for a small group of students requiring specialized programming. Begins in-person on Sept. 16. (Sept. 10)*

Hybrid Learning (Cohorts B & C) includes beginning school with distance learning on Sept. 16. Once hybrid starts (Oct. 5 for B and Oct. 19 for C). Students assigned to teachers in their school building. Includes

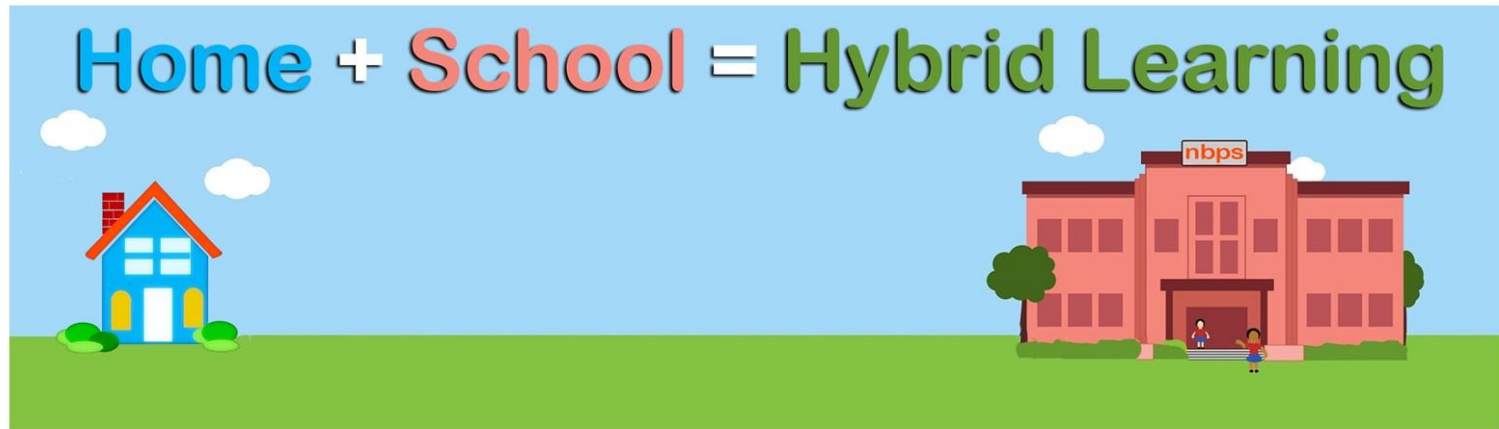
- 3 days of distance learning
- 2 days of in-person learning.

NBPS Distance Learning Academy (Cohort D) includes 5 days of distance learning (no in-person learning days). Students assigned to teachers from the New Bedford Public Schools.

Day 1 – September 16* 100% of students

- Attendance will be taken!
- Standards-Based Grades & Letter Grades
- Student Readiness Checklist:
 - NBPS computer
 - Internet connection
 - Mark your calendar and virtually attend all synchronous times

*Sept. 10, 2020 – HayMac, Gomes, Parker



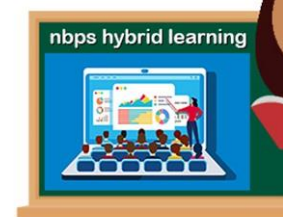
Hybrid Learning combines traditional classroom experience, experiential learning objectives, and digital course delivery that uses the best option for each learning objective.



+



=



Blended Learning

A style of education in which students learn via electronic and online media as well as traditional face-to-face teaching.

All 3 Models involve blended learning.



Structures for Successful Hybrid Learning

Structures for Successful Hybrid Learning

- Consistency of instruction is critical for student success. Therefore, all students will continue with the distance learning format as primary source of instruction.
- The in-person day will provide the opportunity to receive instructional support, build relationships, emotional health, and promote the social aspect of learning.

IN-PERSON (HYBRID MODEL)

► Even if students can't sit together at tables or huddle over math problems in pairs, they will at least be in the same room at the same time. This is the opportunity for peer interaction and collaboration. It's also an opportunity to support kids' social-emotional health by focusing on instructional work that builds relationships. In-person instruction will include a wide range of activities.

DISTANCE (HYBRID MODEL)

- ▶ Students will be doing some independent work outside of class, but they will also have peer and teacher interaction.

- ▶ **Remote activities could include:**

- ▶ listening to recorded read-alouds
- ▶ reading text independently
- ▶ listening to a lecture or video
- ▶ working on problem sets
- ▶ responding to discussion prompts
- ▶ self-assessment
- ▶ giving peer feedback
- ▶ contributing group projects online
- ▶ writing

Sample Hybrid Schedule – Elementary Distance Day

8:15 - Login to Computer & Check Assignments

8:30 – ELA Independent Work

9:30 – Math Independent Work

10:30 – Specialist Class (pre-recorded)

11:30 – Lunch / Break

12:00 – Social Studies or Science (pre-recorded)

12:30 – ELA Lesson with Teacher (live online)

1:15 – Math Lesson with Teacher (live online)

2:00 – Closing Meeting (live online)

Sample Hybrid Schedule – Elementary In-Person Day

8:15 – Arrival / Breakfast

8:30 – Morning Meeting

9:00 – ELA Lesson with Teacher (in-person)

10:00 – Math Independent Practice (in-person)

11:00 – Specialist Class (in-person)

12:00 – Lunch / Recess (outside @ school)

12:45 – Online ELA Practice

1:15 – Online Math Practice

1:45 – Social Studies or Science (pre-recorded)

2:15 – Organize for Homework/Next Day

2:30 – Dismissal

Sample Middle & High School Student Schedules

SAMPLE MIDDLE SCHOOL STUDENT SCHEDULE	
In-Person / Hybrid / Distance Learning	
School Begins 7:50	Homeroom
Period 1	English Language Arts
Period 2	Social Studies
Period 3	Unified Arts
Period 4	Math
Period 5	Science
Period 6	Unified Arts
Dismissal at 2:30	

SAMPLE HIGH SCHOOL STUDENT SCHEDULE	
In-Person / Hybrid / Distance Learning	
School Begins 7:28	Homeroom
Period 1	English Language Arts
Period 2	History/Social Sciences
Period 3	Foreign Language
Period 4	Unified Arts
Period 5	Science
Period 6	Math
Period 7	Physical Education
Dismissal at 2:40	

GOOGLE CLASSROOM & TEAMS

Purpose – to streamline the process of sharing information between teachers and students.

► Key Features

- ✓ Classroom is accessible anywhere with device and internet access
- ✓ Streamline assignments & access to information
- ✓ Foster collaboration and communication

► Expectations for Students

- ✓ Students will need to access Google Classroom or TEAMS daily
 - Google Classroom for Pre-K to 7, option for 8
 - Microsoft TEAMS for Grade 8 to 12

Purpose – Single Sign On (SSO) portal for easy access to digital learning resources used by teachers and students.

CLEVER



- Student access to other online programs is made easy with Clever Badges.
- Clever makes it easier for teachers to support students in logging into various applications.

Savvas (Pearson) Easy Bridge

- Reading Street*
- Envisions*
- Interactive Science (2-5)*

Mystery Science (K-5)

Renaissance Learning

- STAR Testing (Math, Reading, Early Lit)
- MyOn
- Freckle

LEXIA Core 5



Elementary Curriculum

*Pilot Programs may be substituted in certain circumstances


Ready Classroom Math

- Math Curriculum
- I-Ready Math & ELA Assessments

Savvas (Pearson) Science

Actively Learn

- ELA
- Social Studies
- Science
- Online Library



Middle
School
Curriculum

All Courses Continue

EduLastic

- Math & ELA Assessments



High
School
Curriculum



nbps

**New Bedford
Public Schools**



THANK YOU

APPENDIX

use if necessary

NBPS COVID-19 RESPONSE



- **NBPS comprehensive Remote Learning Plan** [NBPS Remote Learning Plan May 2020](#) is a fluid document that we continue to upgrade

COVID-19 RESOURCES:

[Guidance: Strengthening Our Remote Learning Experience](#)

[Massachusetts Elementary Prerequisite Content Standards](#)

[Massachusetts Secondary Prerequisite Content Standards](#)

Equity: <https://edtrust.org/resource/10-questions-for-equity-advocates-to-ask-about-distance-learning/>

Early Childhood: [social-emotional learning \(SEL\) and approaches to play and learning \(APL\) standards. remote learning guidance](#)

The CDC guidance highlighted in the following link addresses several critical areas that we have begun to delve into: <https://www.cdc.gov/coronavirus/2019-ncov/community/reopen-guidance.html>

Education Trust: <https://s3-us-east-2.amazonaws.com/edtrustmain/wp-content/uploads/2014/09/06163247/10-Questions-for-Equity-Advocates-to-Ask-About-Distance-Learning-During-COVID-19-May-2020.pdf>

CDC Guidance on reopening offers suggestions that we review and include in our planning for the summer and fall

[https://www.cdc.gov/coronavirus/2019-ncov/community/schools-childcare/Schools-Decision-](https://www.cdc.gov/coronavirus/2019-ncov/community/schools-childcare/Schools-Decision-Tree.pdf?referringSource=articleShare)

[Tree.pdf?referringSource=articleShare](#)

[Resource to help boost immune system](#)

<https://www.marioninstitute.org/coffee-with-dr-hennie/>

NEW BEDFORD PUBLIC SCHOOLS

A DAY IN THE LIFE OF A STUDENT

During Remote Learning at New Bedford Public Schools

newbedfordschools.org

