



New Bedford Public Schools
 Division of Adult/Continuing Education & Summer School

181 Hillman Street, Building 9, Room 209
 New Bedford, MA 02740-4346

Telephone: (508) 997-4511, Ext. 2419 FAX: (508) 991-6575
 TTY: (508) 991-5710



Rosemary E. Wilde
 Director



SUMMER 2010 GED Test Schedule



Learn More, Earn More!

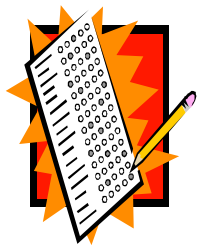
General Educational Development Test

Day Test Location:

Paul Rodrigues Administration Building, Auditorium** (1st Floor)
 455 County Street, New Bedford, MA 02740

**** Examinees must arrive on time to be escorted to the testing area.**

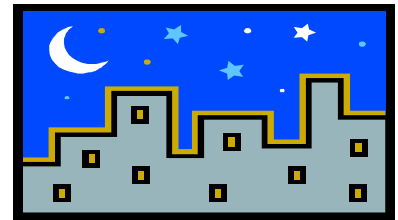
Time: 9:00 a.m.



<u>DAY</u>	<u>DATES</u>	<u>TESTS AVAILABLE</u>
Tuesday	July 6	Reading, Writing, Science, Social Studies
Monday	July 12	Reading, Writing, Science, Social Studies
Monday	July 19	Math
Monday	July 26	Reading, Writing, Science, Social Studies
Monday	August 2	Reading, Writing, Science, Social Studies

Evening Test Location:

New Bedford High School
 Green House, Room 114
 230 Hathaway Boulevard
 New Bedford, MA 02740



Time: 6:30 p.m.

<u>DAY</u>	<u>DATES</u>	<u>TESTS AVAILABLE</u>
Wednesday	July 7	Reading, Writing, Science, Social Studies
Wednesday	July 14	Reading, Writing, Science, Social Studies
Wednesday	July 21	Reading, Writing, Science, Social Studies
Wednesday	July 28	Math
Wednesday	August 4	Reading, Writing, Science, Social Studies



Examinees are required to arrive **on time!**

If an examinee fails to arrive on time a **“no show”** fee will be charged and all pending appointments will be cancelled!

Respect assigned parking spaces. Policies strictly enforced.

No food or drink should be brought to the testing centers.

Congratulations on your decision to take the GED Test to earn a Massachusetts High School Equivalency Diploma. In order to take the Official GED, General Educational Development Test, you must complete the *Test Registration* process conducted at the Division of Adult/Continuing Education & Summer School Office on Monday, Tuesday or Wednesday between 9:00 a.m. and 2:30 p.m. (Evening registrations are conducted monthly; please call the office for scheduled dates and times.) For more information regarding *GED Registration* requirements, please call our GED Test Center /Adult Education Information Center at (508) 997-4511 ext. 2419 (TTY: 508 991-5710).

Scheduling/Canceling Testing Appointments:

- Upon completion of the *Test Registration*, you may schedule your testing appointments. Please note: **Test fees will not be REFUNDED.**
- You may begin testing within two weeks of the *Test Registration*.
- Once registered, you **must** make appointments to take each of the five GED tests. Call (508) 997-4511 ext. 2419 (TTY: 508 991-5710) to schedule an appointment with the New Bedford Public Schools' GED Test Center.
- You must call if you need to cancel your appointment. Call 997-4511 ext. 2419, (TTY: 508 991-5710) Monday through Friday, 8:00 a.m. to 3:15 p.m. You must call before 8:30 a.m. on the day prior to your scheduled test. A late cancellation will be considered a “**no show**” and you will be charged the “**no show**” fee.
- “**No show**” fees **must** be paid by bank check or money order, made payable to “**City of New Bedford**” in order to schedule subsequent test sessions. “**No show**” fees can be paid at the New Bedford Public Schools, Division of Adult/Continuing Education & Summer School/GED Test Center Office, 181 Hillman Street, Building 9, Room 209, New Bedford, MA
- Failure to cancel an appointment or failure to show up for any test will result in the cancellation of **subsequent test dates.**
- For **each** test missed, you will be charged a “**no show**” fee of \$25.00. **Fees must be paid by bank check or money order made payable to: City of New Bedford.**

Testing Procedures:

- You must arrive **on time**. You will not be permitted to test if you are late. You will be charged a “**no show**” fee.
- Photo identification is **required** in order to register and for admittance to **each** test session. Failure to bring **the same ID** as utilized at the *Test Registration* will be considered a “**no show**” and the “**no show**” fee will be charged. Other than picture identification, bring nothing with you when you report for GED testing. **Cell phones, beepers and headgear are not allowed.** Only examinees will be admitted!
- Call (508) 997-4511 ext. 2419 (TTY: 508-991-5710) for directions to the testing location.

Test Results

Test results/scores will be forwarded to your home address approximately two weeks after completion of the full battery. The full battery consists of five exams: Language Arts Reading, Language Arts Writing, Science, Social Studies and Mathematics.

Requirements for Retesting

Retest(s) must be taken in accordance with the **Massachusetts State GED Retest Policy** after the **completion of the full battery.** You must retest first on any test on which a score below 410 was achieved. The retest fee is \$15 per individual test/retest which must be paid by bank check or money order made payable to “**City of New Bedford**”.

Change of Address

You must complete the change of address form to ensure that scores will be sent to the correct address. It is available at each test session and at the GED Test Center Office.

Special test arrangements can be requested. For further information, please call 997-4511, ext. 2419. (TTY: 991-5710)

If you need a picture ID and you are 59 years of age or older call the **Council on Aging** for details at 991-6250.